

Application News



Omni View Actual View vs. Projected View

Line



On the E6 and E8 BT09 series we introduced a new VCI technology called Omni View.

This new VCI mode gives you the opportunity to use VCI in the most flexible way. It is possible to use:

- Line
- Curve
- Trace
- Poly Line

Polyline



When using the line it is not possible to have the cervix and endometrium in one Omni View.

The technique to use in this uterus is the polyline. With the polyline it is possible to visualize the cervix and endometrium in a coronal view.

Actual View



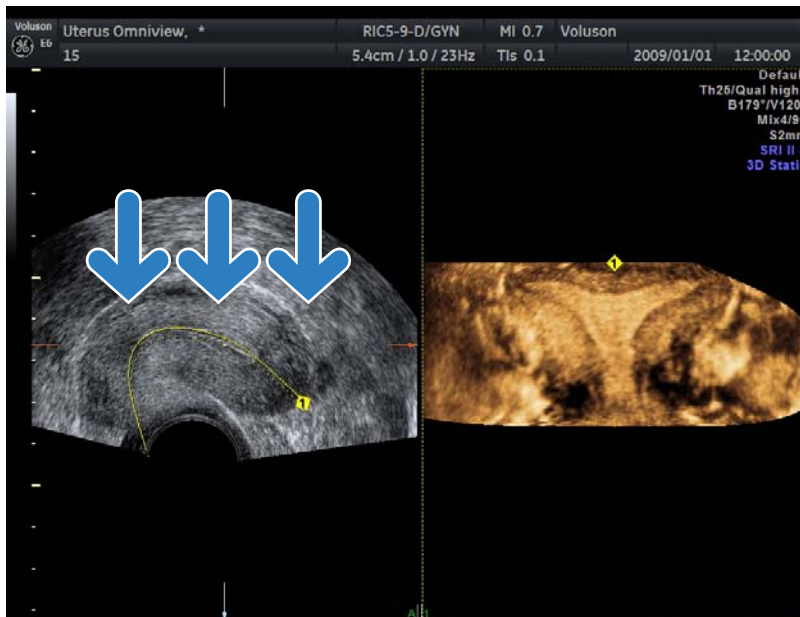
When using **Polyline** it is possible to visualize the **coronal** view of the cervix and endometrium in 2 different views:

- Actual view
- Projected view

The actual length of the polyline is projected. The polyline is projected as a straight line.

Omni View Actual View vs. Projected View

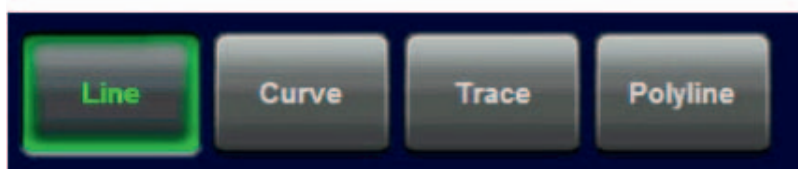
Projected View



Projected view visualize the projection of the poly line according to the arrows. This means not the real length of the polyline reconstruction is visualized.



How to select Polyline 4D on the E6 and E8 BT09



- Select 4D
- On the touch screen select VCI Omni View
- Select Setting and select Polyline

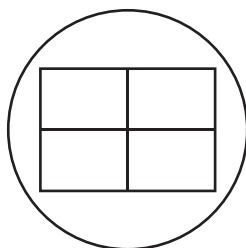
Omni view on stored volume dataset

- Reload the volume dataset
- Select sectional planes
- Select Omni View
- It is possible to use Line, Curve, Trace and polyline

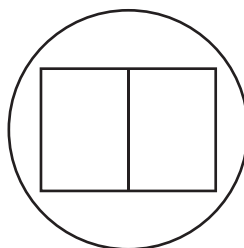
Tips

- Have a close look at trackball functions on the screen. With the trackball you can position, rotate and set the line.
- You can use 3 Omni View reconstructions at once. Select ref. Line on Touchscreen.
- Use VCI static to enhance contrast resolution
- You will find Projected view and Actual view if you select -/+ next to VCI on the touchscreen

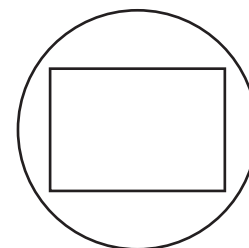
Omni View Ref. Line shows any 3 slices on a reference image simultaneously on the screen.



Press the Quad-screen-format button to activate Omni View Ref. Line view.



Press the Dual-screen-format button to activate Omni View dual view.



Press the Single-screen-format button to switch back to Omni View full format view,

