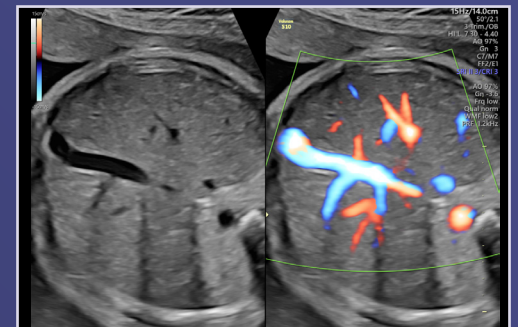
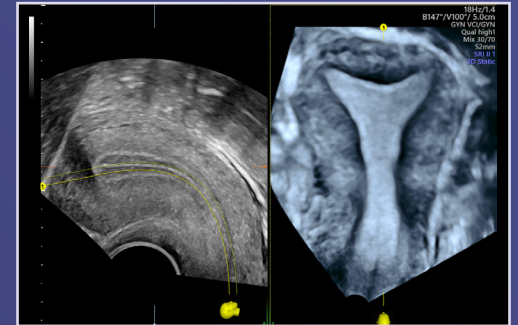
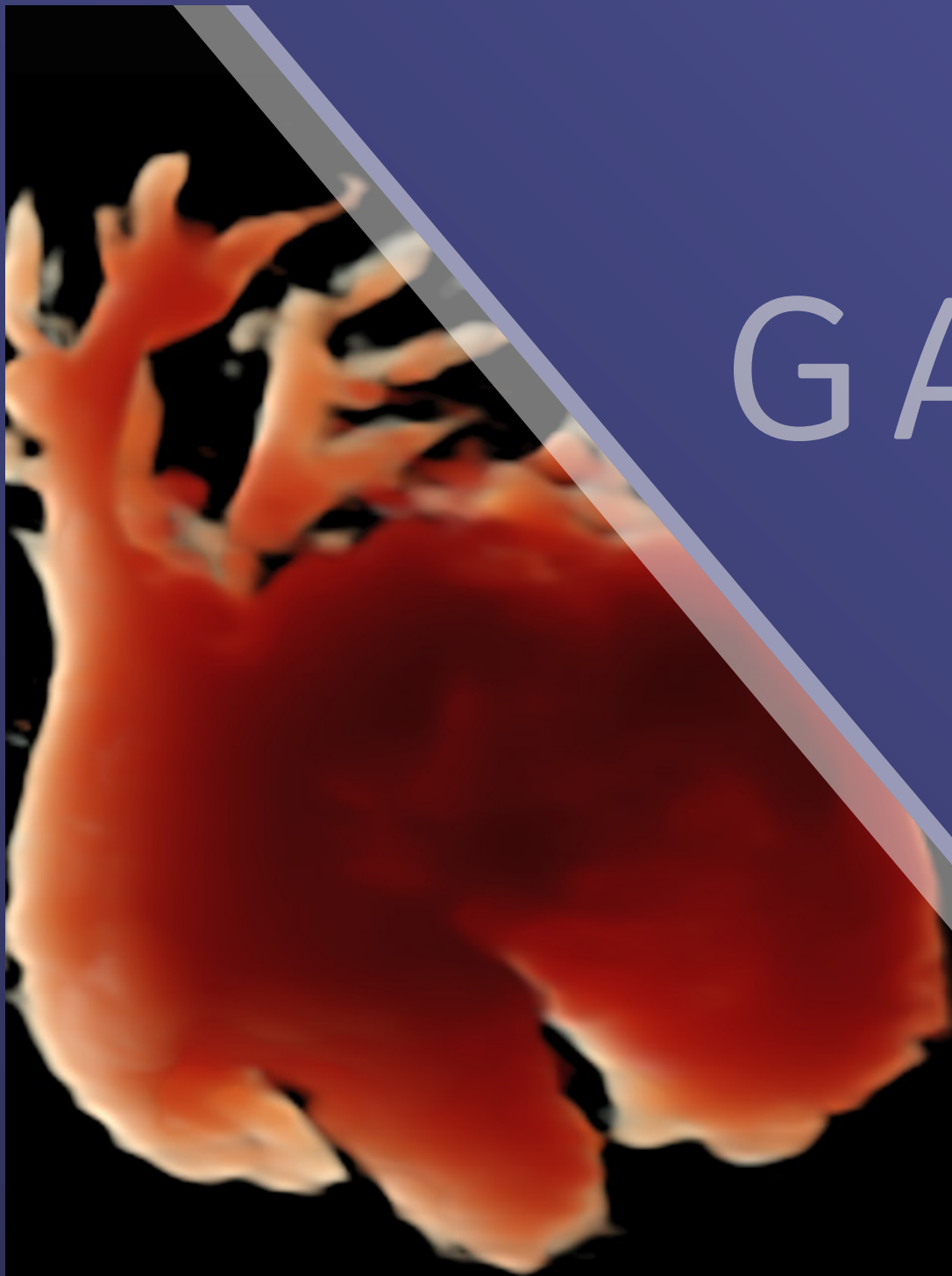
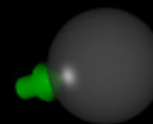


# IMAGE GALLERY

VOLUSON™ S10

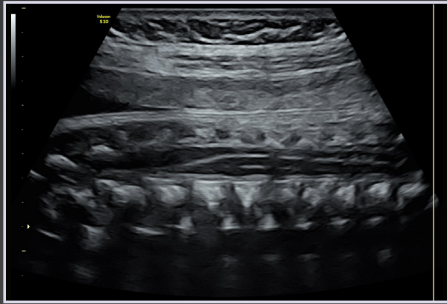


gehealthcare.com



3D





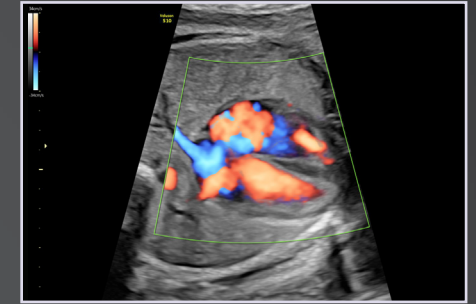
26 week fetal spine



Uterus



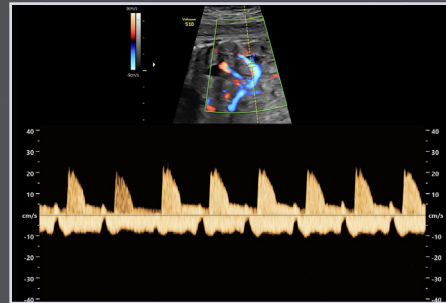
8 week fetus with HDlive™



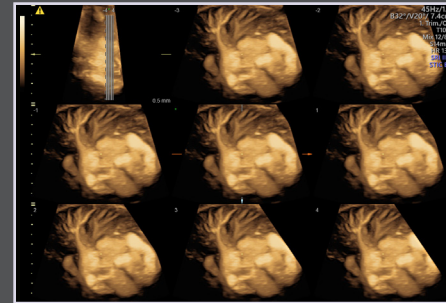
Fetal heart with HD-Flow



29 week fetal brain



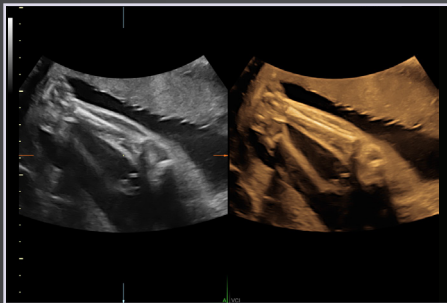
HD-Flow and pulsed wave Doppler of fetal kidney



B-Flow in heart and lung displayed with TUI and VCI



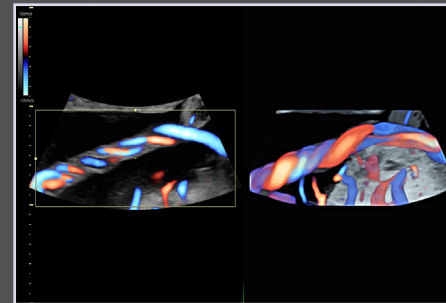
Nuchal translucency and Intracranial translucency measured with SonoNT™ and SonoIT



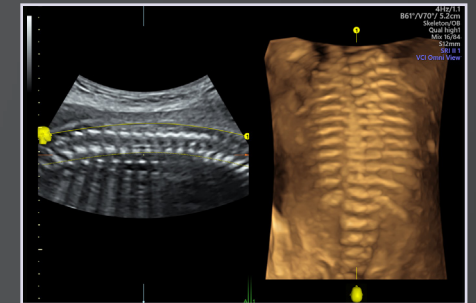
Lower leg bones seen with VCI-A



Fetal face with HDlive



3D Glassbody rendering of umbilical cord



Fetal spine rendered with OmniView



© 2018 General Electric Company - All rights reserved.

GE Healthcare reserves the right to make changes in specifications and features shown herein, or discontinue the product described at any time without notice or obligation. Contact your GE Healthcare representative for the most current information. GE, the GE Monogram, Voluson, SonoNT, HD-Flow and HDlive are trademarks of General Electric Company. GE Healthcare, a division of General Electric Company. GE Medical Systems, Inc., doing business as GE Healthcare.

March 2018  
JB55327XXg