

VOLUSON S10

YOUR STANDARDS,
BEYOND YOUR EXPECTATIONS

The range of women's healthcare needs is broad. From maternal and fetal health to gynecological care, the Voluson™ S10 will ensure your practice is ready for any patient and any complexity.

Voluson's extraordinary image quality, advanced clinical tools, and intelligent workflow enable high quality, efficient care, even under demanding conditions. The Voluson S10

offers expert capabilities to expand your clinical capabilities and your practice, to build a healthier community.

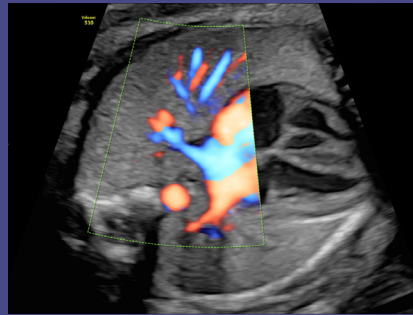


ADVANCING THE POSSIBILITIES

Extraordinary capabilities for your imaging needs

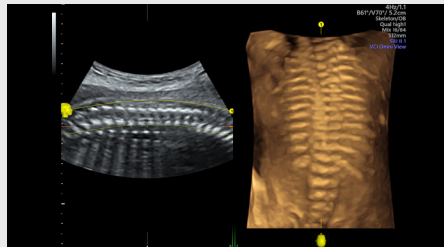
Built on GE's powerful Voluson Core Architecture, the Voluson S10 helps you make clinical decisions with confidence. Utilizing common hardware elements and software across the Voluson portfolio, the Voluson S10 provides you

- Superb clarity and detail resolution in 2D images
- Easy to acquire 3D/4D imaging to provide more information and assist in patient communication
- Outstanding sensitivity through advanced color Doppler when assessing anatomy and function
- Exceptional penetration with consistent imaging to address even your most difficult to image patients



Obtain another perspective of structures from increased depth perception and anatomical realism with **HDlive™** technology – an essential problem solving tool

Explore **3D Printing** for rapid clinical prototyping, research, and parent bonding



Easily view irregularly shaped structures with **Advanced Volume Contrast Imaging (VCI) with OmniView** – Adjust slice thickness on 3D or 4D images to help enhance contrast resolution then apply OmniView to obtain any plane from a 3D or 4D volume by simply drawing a line, curve, poly-line or trace on anatomy

EMPOWERING PERSONALIZED CARE

Insights helping lead to better connections

Experience intuitive volume navigation with Voluson **xTouch** while maximizing comfort and workflow through a modern ergonomic design including **widescreen 23" monitor**

Decrease complexity and increase exam consistency with Voluson's **Sono-automation** technologies



SonoNT semi-automated nuchal translucency measurement

Semi-automated Nuchal Translucency and Intracranial Translucency measurements that help provide reproducibility and integrate easily into workflow of first trimester assessments

Assess essential views of the fetal heart from a single STIC volume using **SonoVCAD™heart**

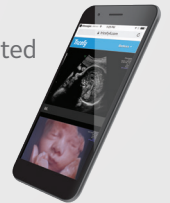
Balance schedules while increasing patient satisfaction with **Scan Assistant**. This flexible, customizable exam protocol tool helps increase exam consistency and productivity while documenting for quality assurance purposes

Ovarian cancer risk estimate based on IOTA (International Ovarian Tumor Analysis) Simple Rules and IOTA LR2 are IOTA Group Approved.



Protect sensitive data with Voluson ultrasound systems advanced security features including **Whitelisting** and **HD encryption**

Connect with colleagues/patients and store encrypted images with the help of **ViewPoint™** and **Tricefy™ inside**



LIKE FAMILY – WE'RE HERE FOR YOU

Exclusive offerings to enhance your expertise.

Join **VolusonClub** – our ultrasound community dedicated to the education and collaboration of women's health providers like you

>25K
members



© 2018 General Electric Company – All rights reserved.

GE Healthcare reserves the right to make changes in specifications and features shown herein, or discontinue the product described at any time without notice or obligation. Contact your GE Healthcare representative for the most current information. GE, the GE Monogram, Voluson, HDlive, SonoVCAD and ViewPoint are trademarks of General Electric Company. Tricefy™ trademarks are registered trademarks of Trice Imaging, Inc. GE Healthcare, a division of General Electric Company. GE Medical Systems, Inc., doing business as GE Healthcare.

March 2018
JB55327XXf